



Land Developability

in Warrenton, Oregon

Warrenton Planning Commission
5/11/2023



JAM Planning

Agenda

02

01 Project Overview

02 Background &
Existing Conditions

03 Public Engagement

04 Housing Planning

05 Our Process & Analysis

06 Next Steps

Our Team



Anis Boughanmi MURP

Focuses on land use and transportation.

Has a background in architecture and green development and urban design.



Jovan Merceron MURP-MPH

Focuses on emergency management and preparedness.

Has a background in public health.



James Dingwall MURP

Focuses on economic development and land use.

Has a background in rural & regional economic and small business development.



Miranda Seekins MURP

Focuses on environmental planning and economic development.

Has a background in sustainability.



Maddy Knickerbocker MURP

Focuses on affordable housing design, development, and preservation.

Has a background in sociology & political science.



Amanda Ufheil-Somers MURP

Focuses on housing policy and feasibility.

Has a background in consulting, nonprofit journalism, and philanthropy.

Portland State University Workshop

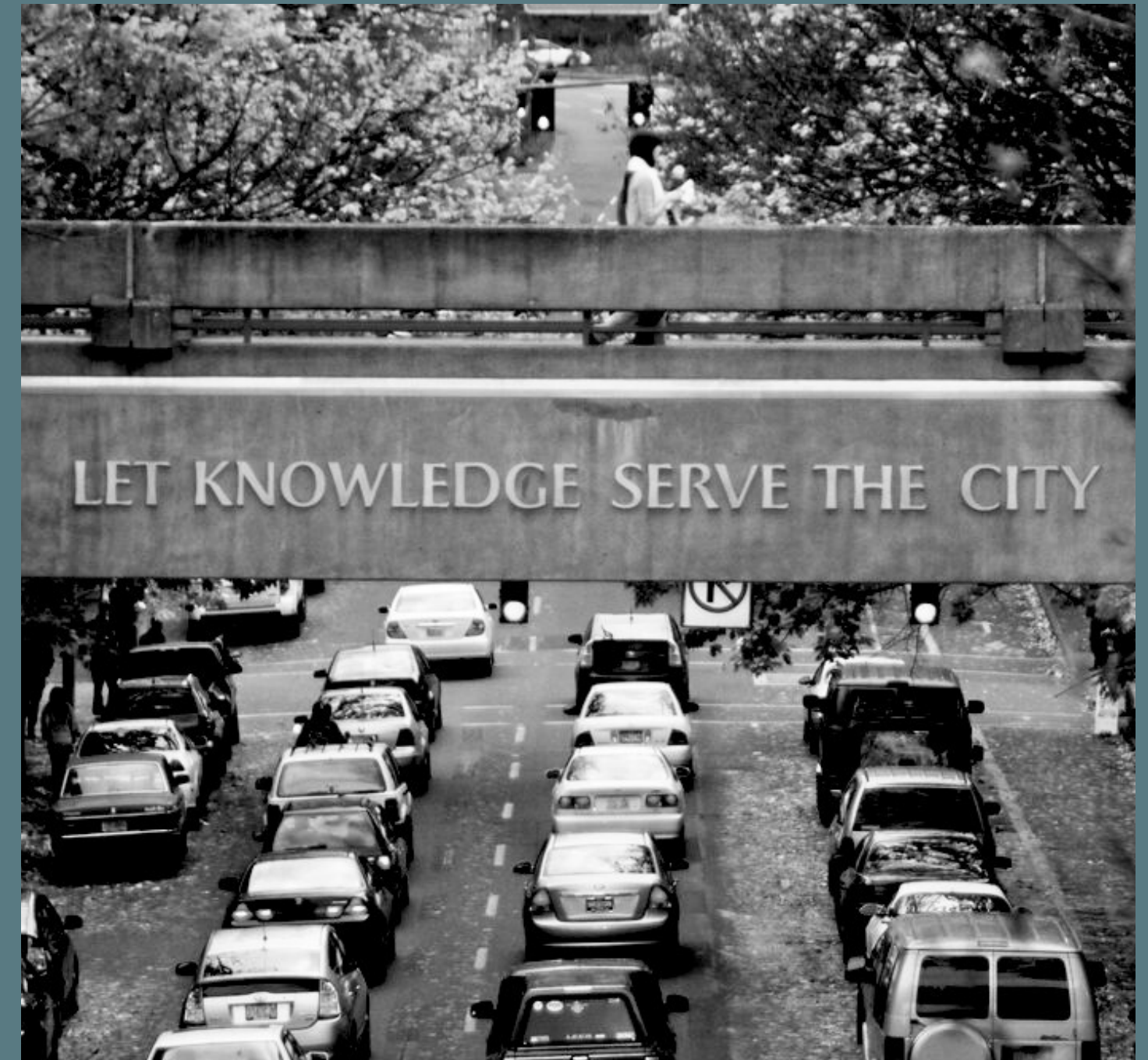
04

The PSU workshop is the final capstone project for the Master of Urban and Regional Planning Program partnering with a client to conduct a planning project.

It traditionally involves working closely with community stakeholders and local government officials to identify key issues, gather data, analyze existing conditions, and develop planning strategies, resulting in a detailed planning report that includes final recommendations.

This project's goal is to link future land use with constraints, understanding which areas in the City of Warrenton can best support future housing with lower barriers to development, efficient infrastructure connections, access to community amenities, and reduced exposure to natural hazards of the coastal environment.

This can then guide future public investment and policy development to encourage smart growth.



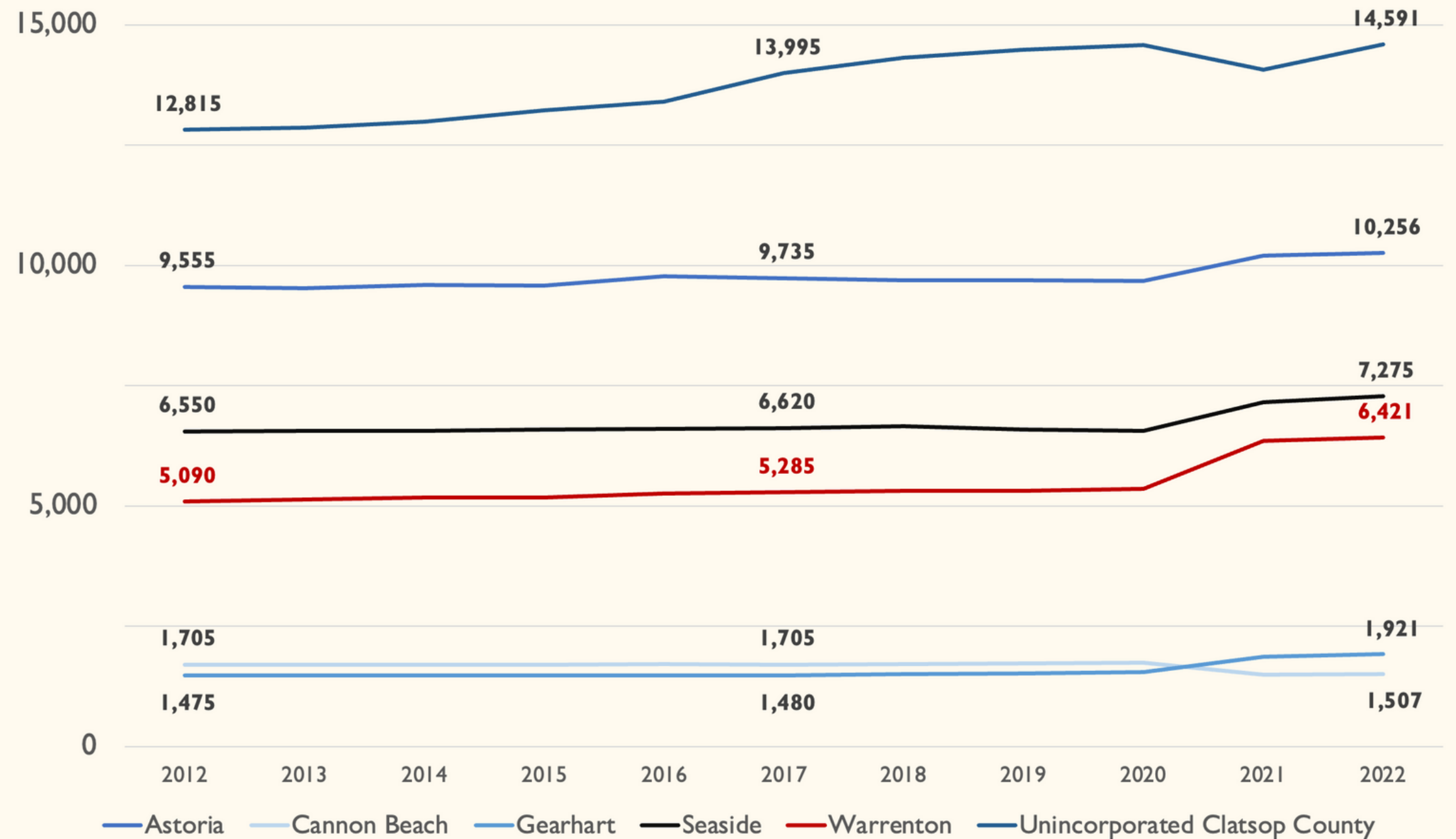
Source: Portland State University

Background & Existing Conditions

Who is Warrenton

- Third most populous town in Clatsop County & among the fastest growing
- Since 2020, Warrenton's population has increased by over 1,000 people
- Increasingly diverse, with non-White residents making up 17% of the population in 2021, up from 5.5% in 2011

Population in Clatsop County, 2012-2022

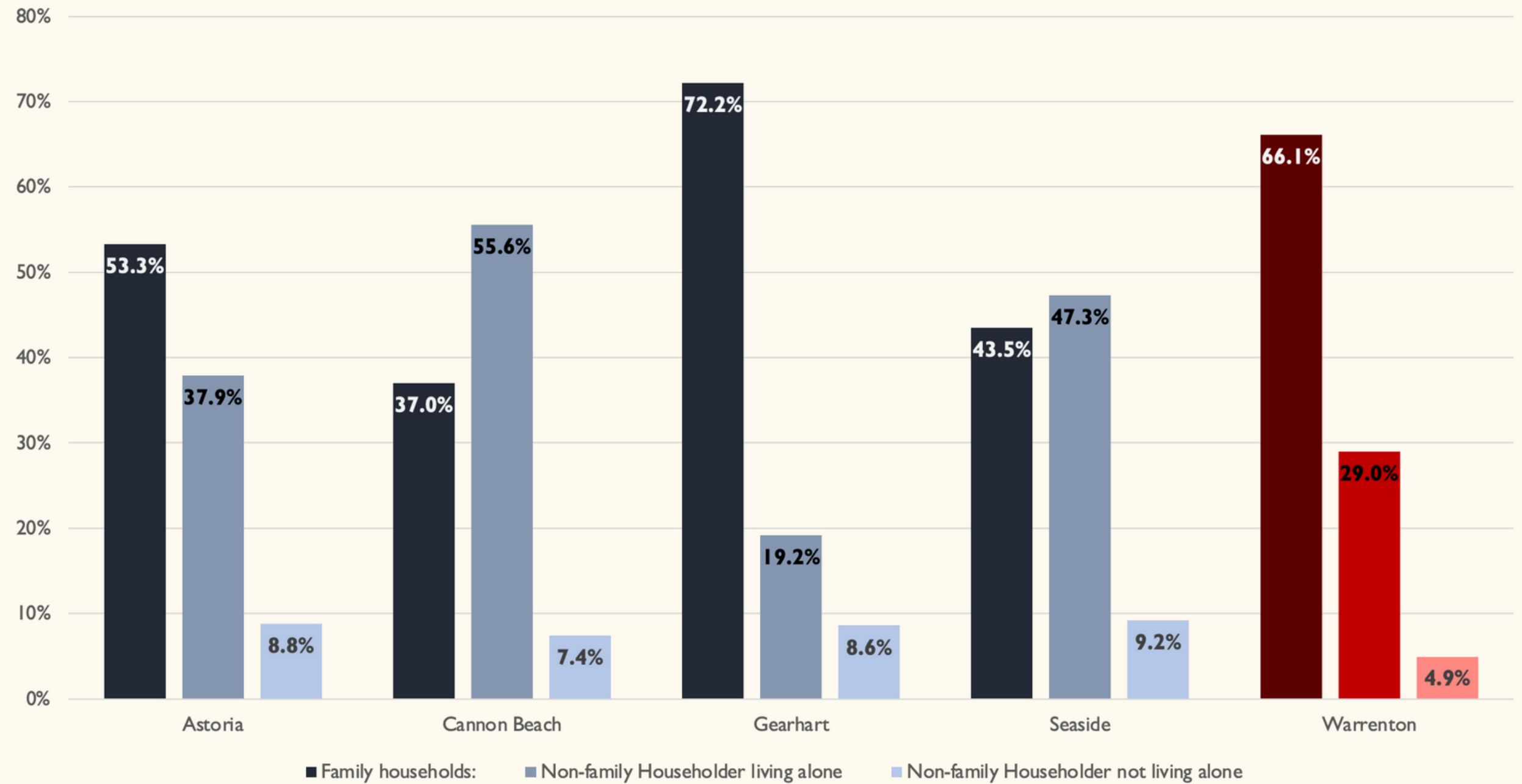


Source: Portland State University Population Research Center Estimates, 2012-2022

Who is Warrenton

Household Status in Clatsop County Cities, 2021

- Almost a quarter of Warrenton’s population in 2021 was under the age of 18
 - Highest share in Clatsop County
- Two-thirds of the town’s households are families
 - 2nd highest shares in the county

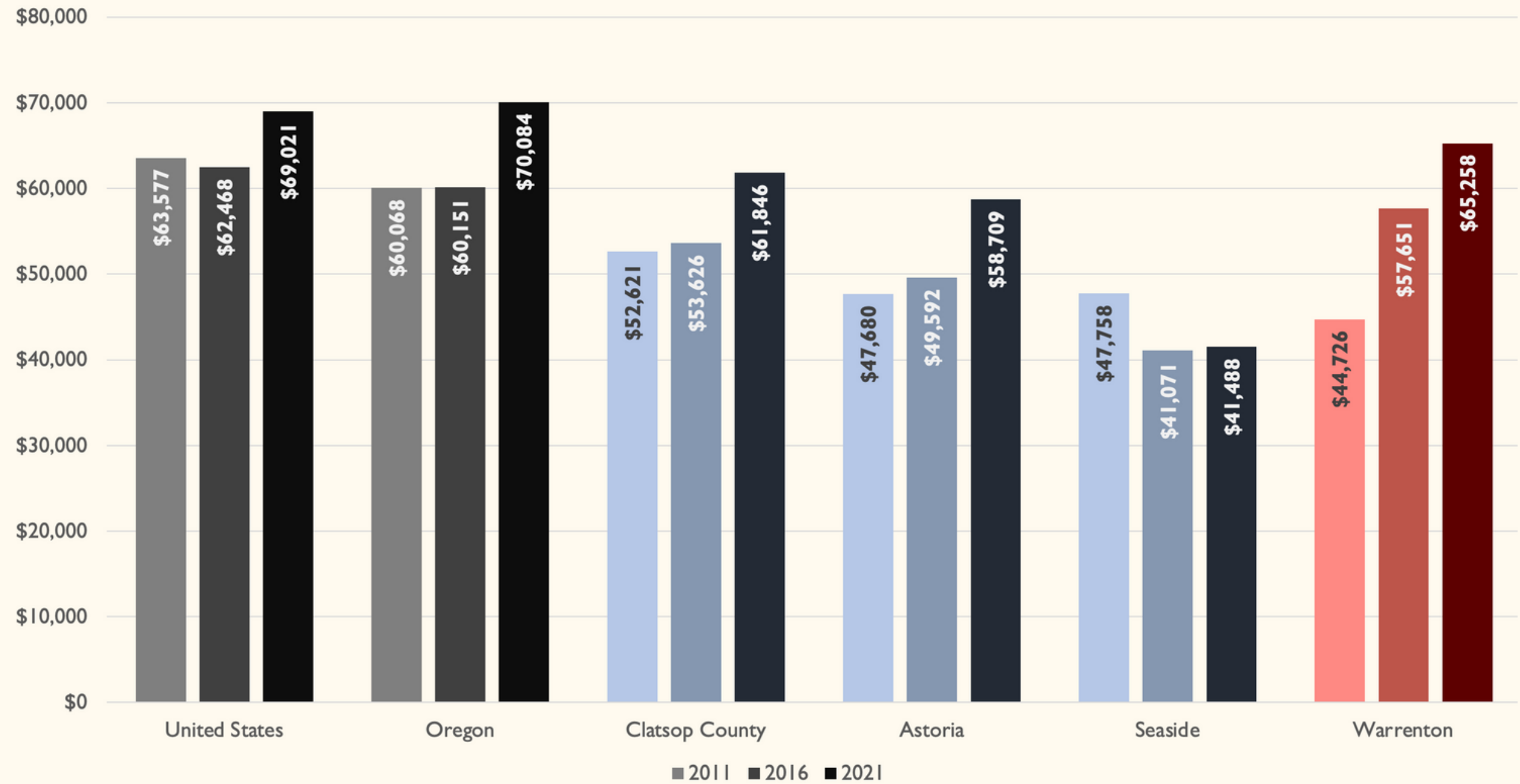


Source: U.S. Census Bureau, American Community Survey 2021 5-Year Estimates, B11001

Who is Warrenton

2011-2021 Median Household Income (adjusted for inflation)

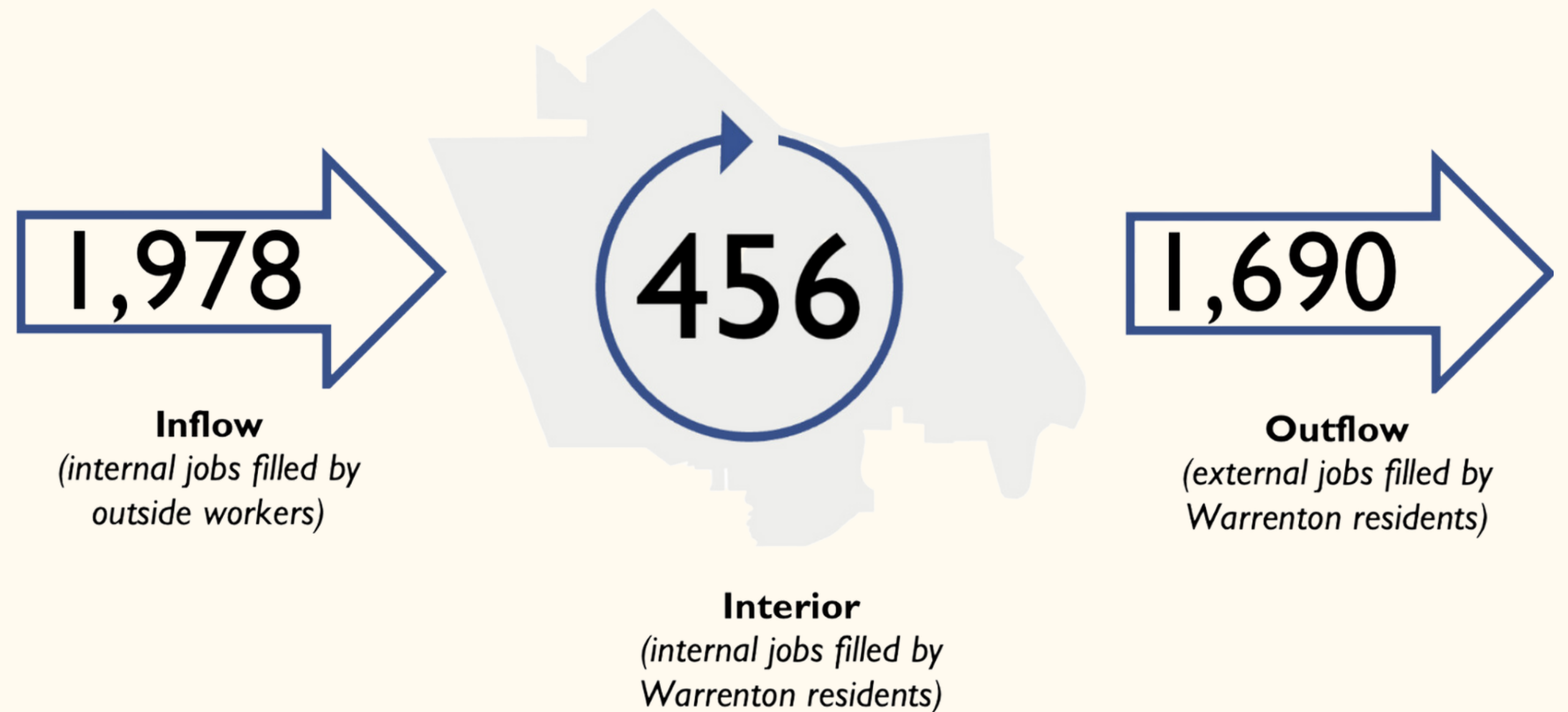
- Had lowest median income in the county in 2011
 - Now has the second highest, at more than \$65,000
- This growth has also represented a larger gain than communities with similar increases



Source: U.S. Census Bureau, American Community Survey 2011, 2016 | 2021 5-Year Estimates, B19013

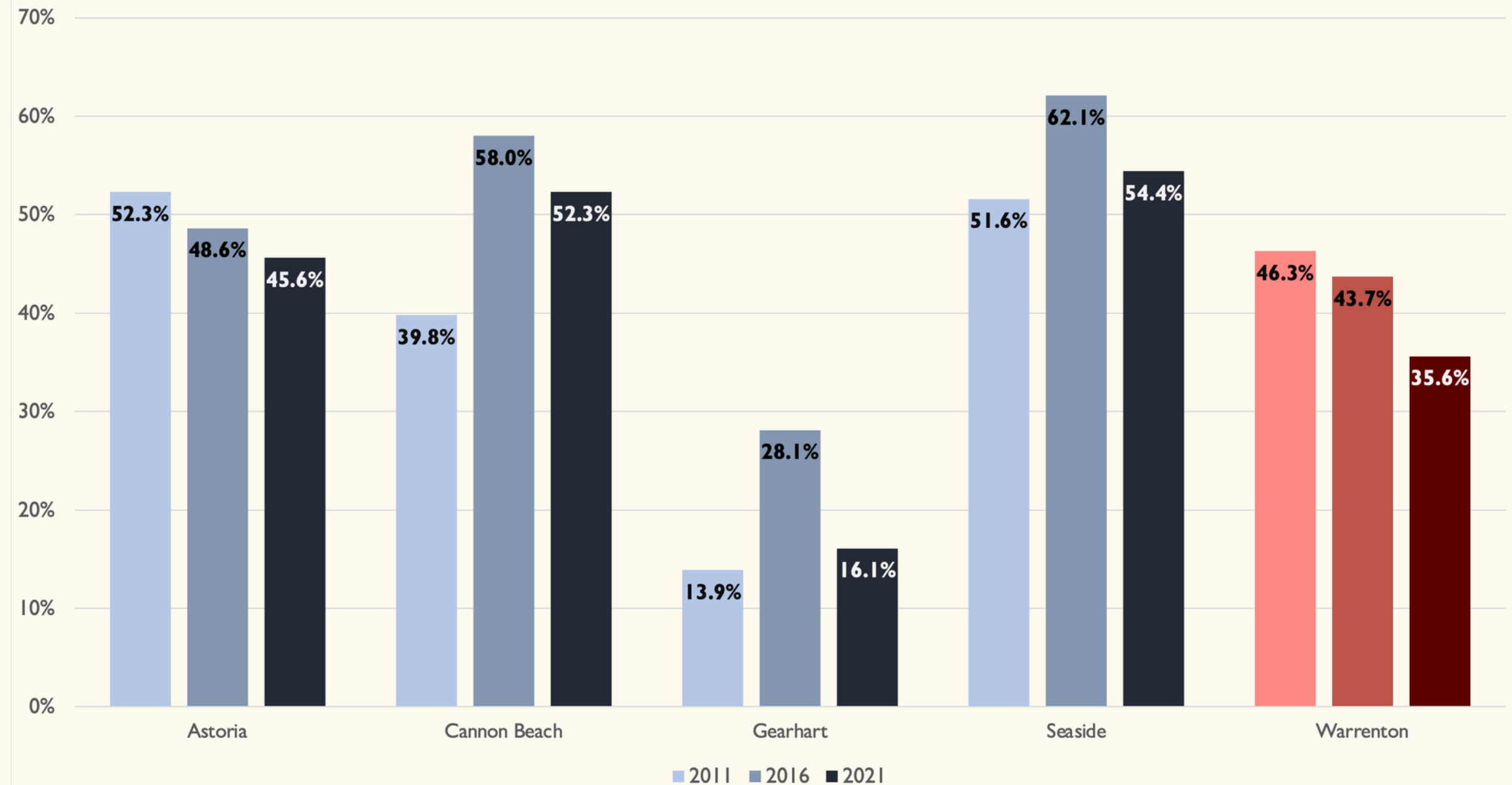
Who is Warrenton

- Sharp disparity in who lives and works in the city
- Residents commute to jobs elsewhere in the County
- Most of the jobs in Warrenton are held by non-local workers
- Between 1,500 and 2,000 commuters travel in and out of Warrenton
 - Only about 450 residents live and work in the city



Where Warrenton Lives

Share of Population Renting, 2011-2021



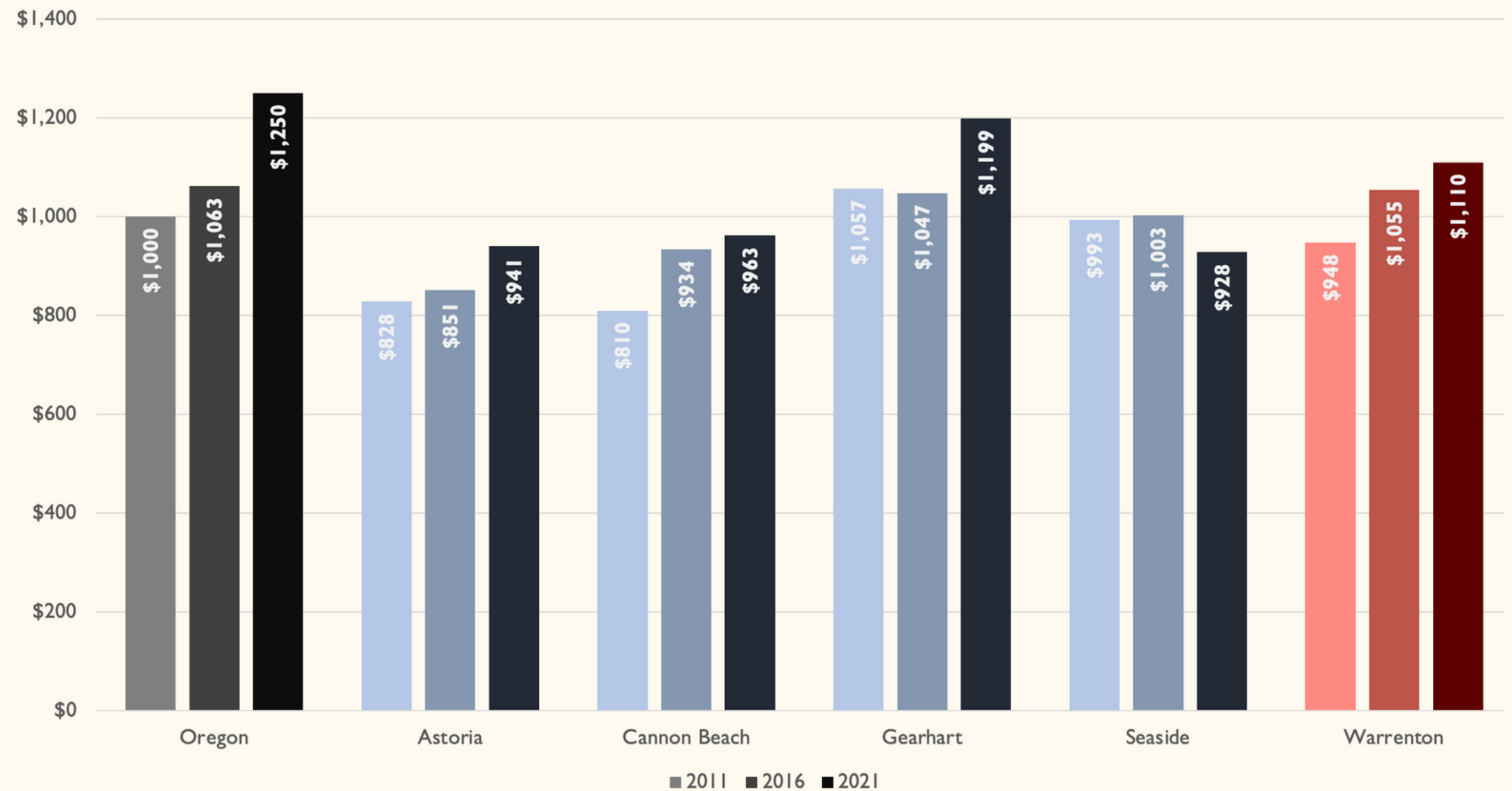
Just under two-thirds of Warrenton residents own their homes and this share has been steadily increasing as the percentage of renters in Warrenton has steadily decreased since 2011.

Source: U.S. Census Bureau, American Community Survey 2021 5-Year Estimates, B25003

Where Warrenton Lives

2011-2021 Median Rent (adjusted for inflation)

- Median rent is the 2nd highest in the County at \$1,100
- Approximately 44% of renters are cost-burdened
- 21% are “severely cost-burdened”



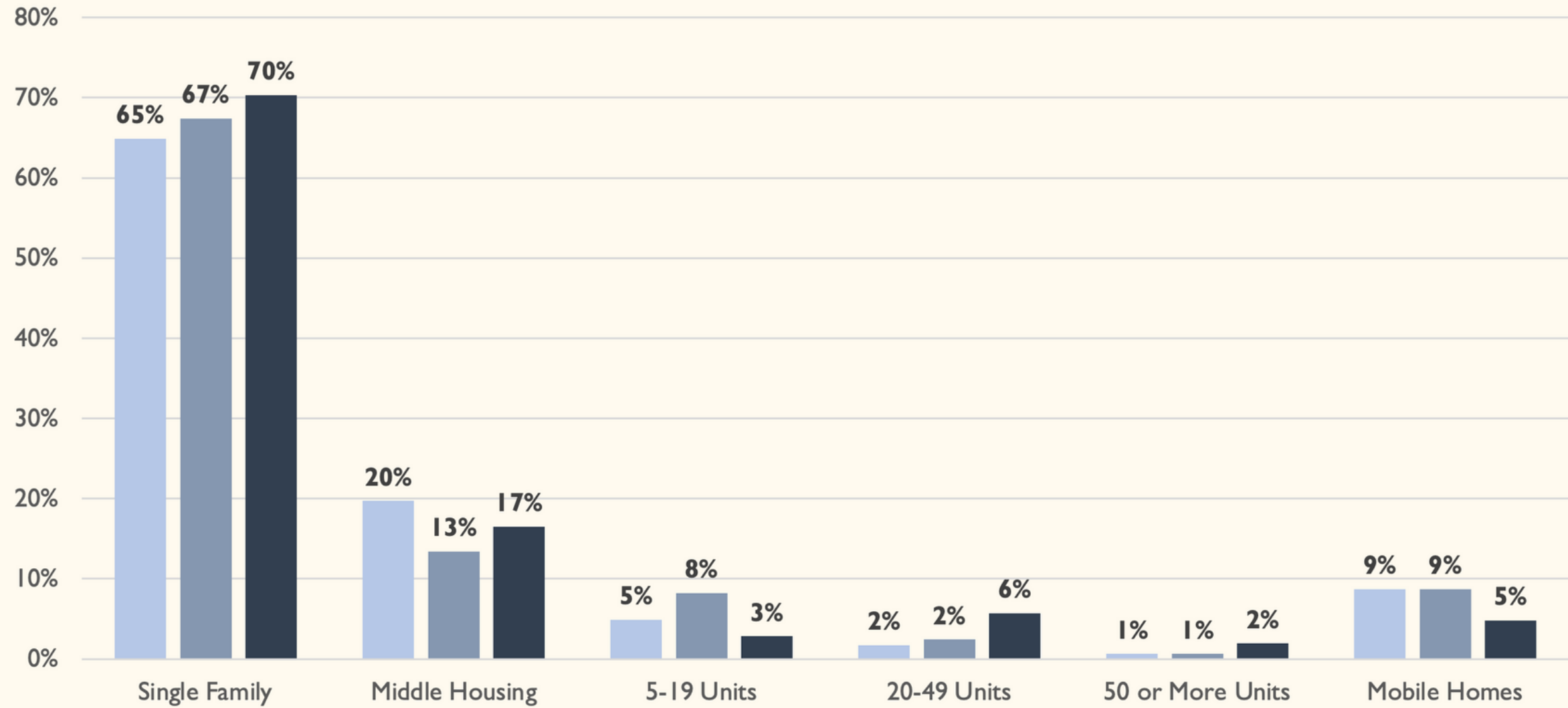
Source: U.S. Census Bureau, American Community Survey 2021 5-Year Estimates, B25064

Where Warrenton Lives

- More than 400 homes between 2010 and 2019
- Most of the City's housing stock is detached homes

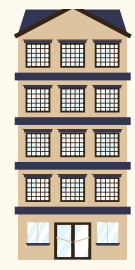
Housing Types in Warrenton

2011 2016 2021



Total Warrenton Housing Units:

2011: 2,125
 2016: 2,183
 2021: 2,506

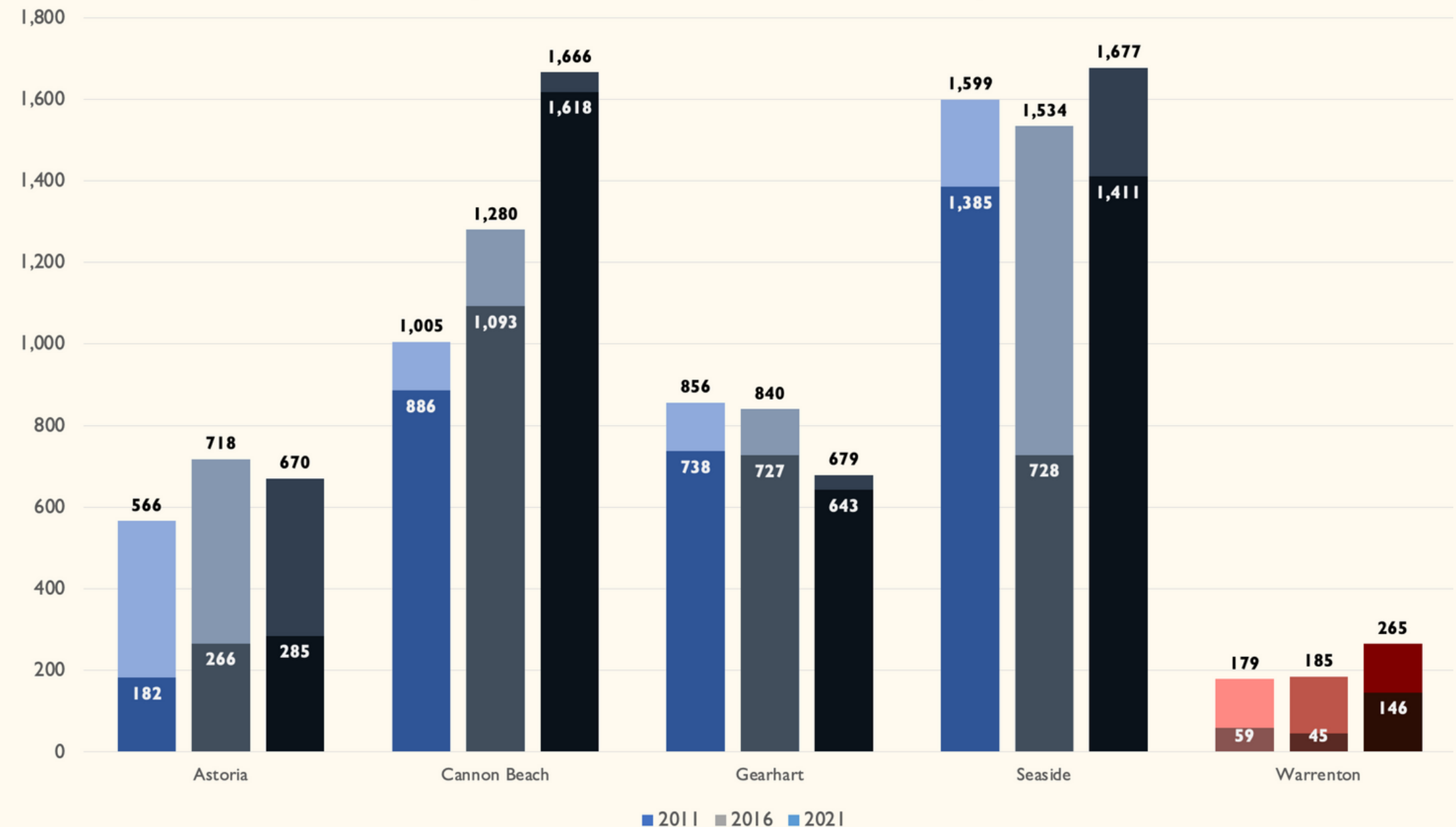


Source: U.S. Census Bureau, American Community Survey 2021 5-Year Estimates, B25004

Where Warrenton Lives

- Fewer vacation homes and lower rates of vacancy compared to other cities in Clatsop County
 - Number of vacation and/or second homes is growing
- The city's overall vacancy rate is approximately 10%
 - Compared to 27% for Clatsop County

Total Vacant Units and Number of Vacant Units for Seasonal, Recreational or Occasional Use, 2011-2021



Source: U.S. Census Bureau, American Community Survey 2021 5-Year Estimates, B25004

Public Engagement

Public Engagement Interviews

Getting the On-the-Ground Data

- Engaged in informal discussions with city staff, housing development partners, regional stakeholders, state policymakers, and consultants who engaged with recent housing planning efforts in Warrenton
- Gathered information on housing availability and development, infrastructure costs, providing housing for a range of incomes and pairing development with social services, the connection between employment and housing, the reality of dealing with environmental constraints, infrastructure extension in practice, code and policy recommendations, and potential next steps for the city to explore

Public Engagement Asset Mapping

- Set up maps of Warrenton to identify the places residents value and what elements of their community they would like to see prioritized in future development



Housing Planning in Warrenton

Planning for Housing

2019 Housing Strategies Report Recommendations:

- Creating land supply
- Policy and development code amendments
- Incentives for development
- Funding tools and uses
- Regional collaboration and capacity building

The County also launched a program identifying 31 available excess county-owned parcels made available to proposals that address local housing and other public service needs



CLATSOP COUNTY HOUSING STRATEGIES REPORT

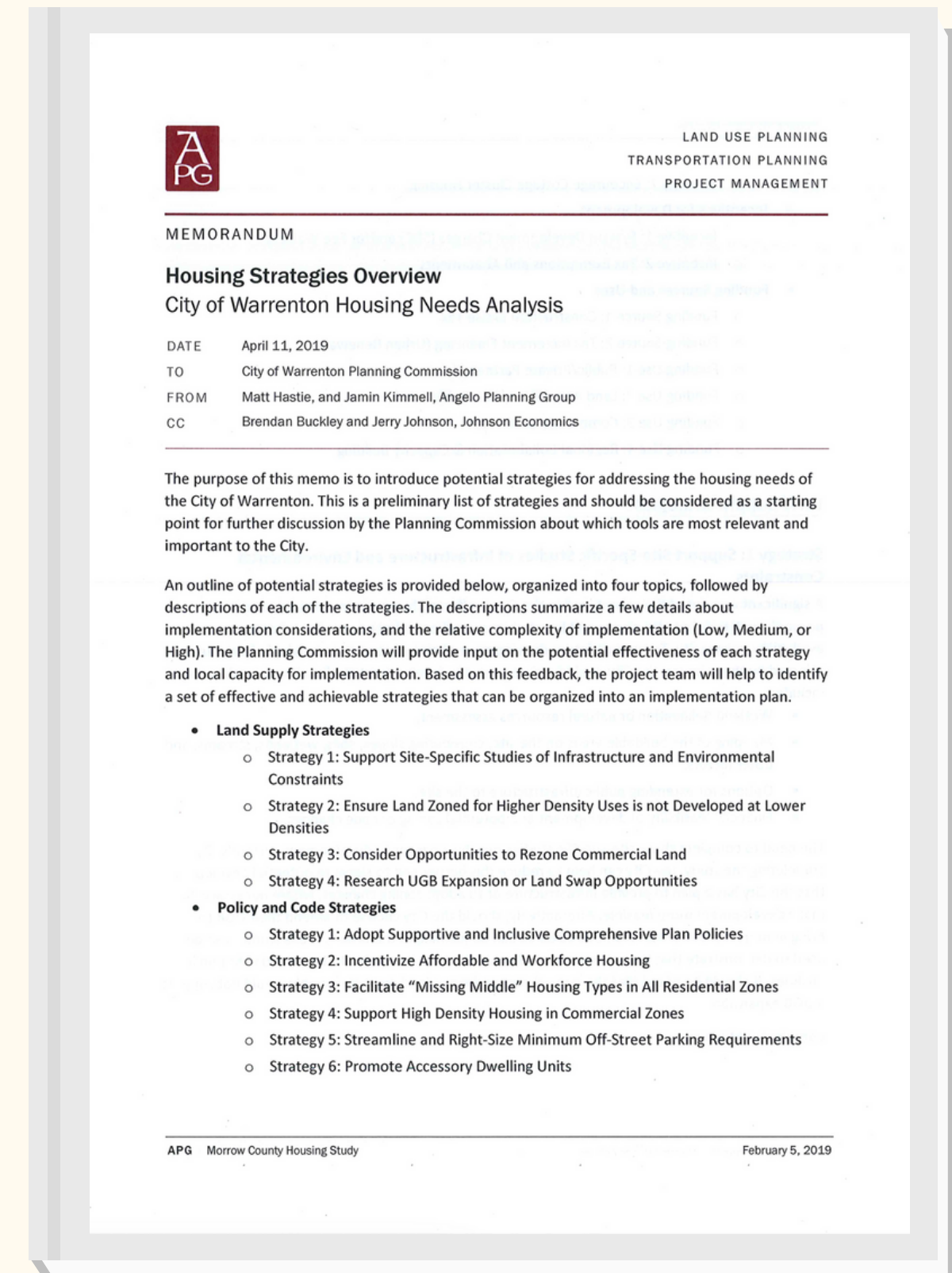
JANUARY, 2019

Planning for Housing

The City engaged in a more robust Housing Needs Analysis and Buildable Lands Inventory in 2019

Current housing planning efforts have resulted in development across Warrenton, including:

- A mixed-use master plan to increase density
- Over 50 units of affordable housing and social services
- New single-family residential development located near the new school
- Expanded infrastructure in southeast Warrenton.

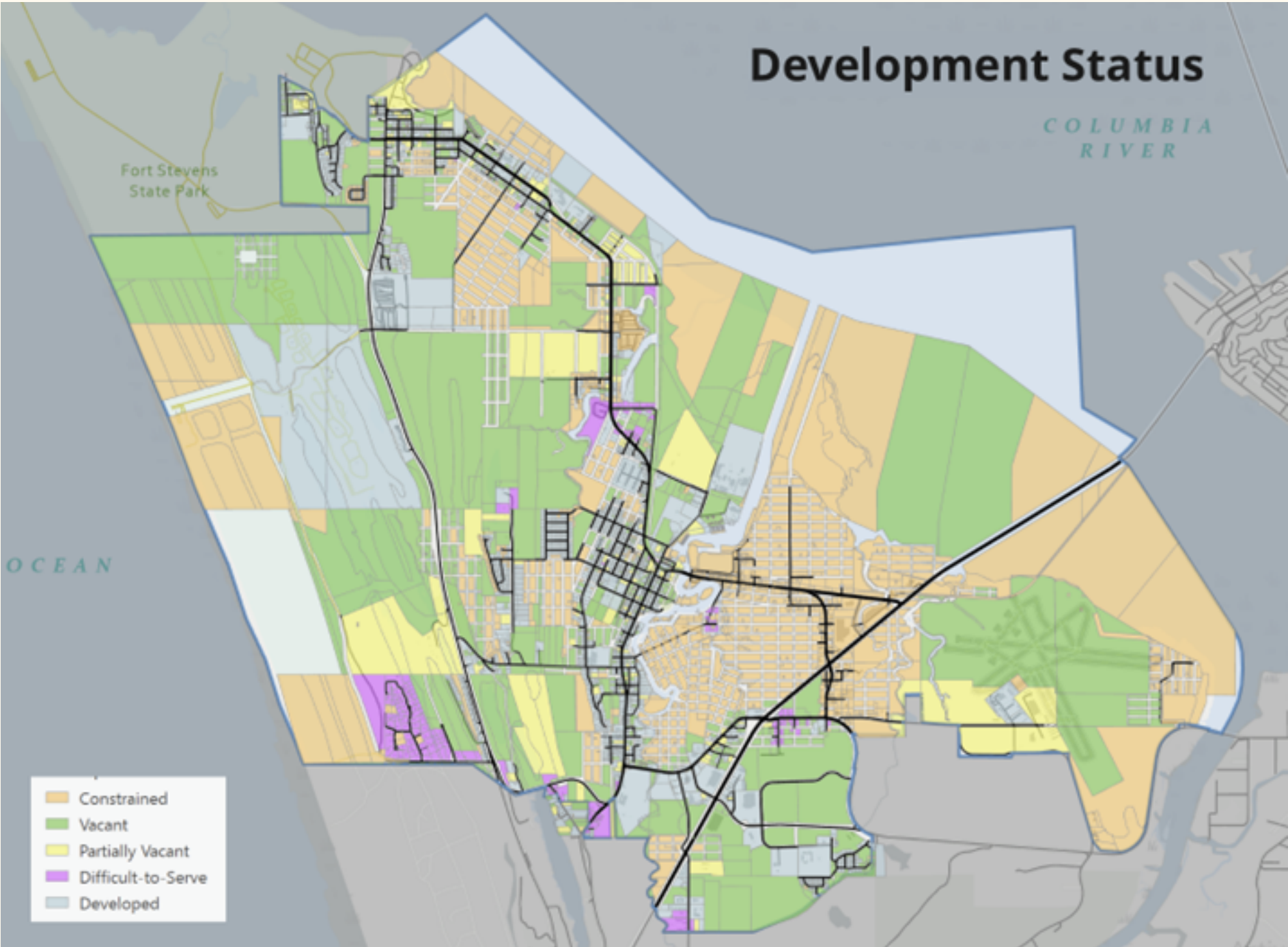


Buildable Lands Inventory Process

- Identify Environmental Constraints
 - Includes flood hazard areas, wetlands, beach and dune areas, and steep slopes.
- Classify Parcels by Development Status
 - Assign constrained, vacant, partially vacant, or developed status.
- Estimate Net Buildable Lands and Housing Unit Capacity
 - Determine unconstrained acres, net buildable acres, projected densities, and housing unit capacity

Warrenton's Adopted 2019 Analysis

This analysis indicated that within Warrenton, 26% of residential parcels are constrained, 19% are developed, and 54% are vacant or partially vacant.

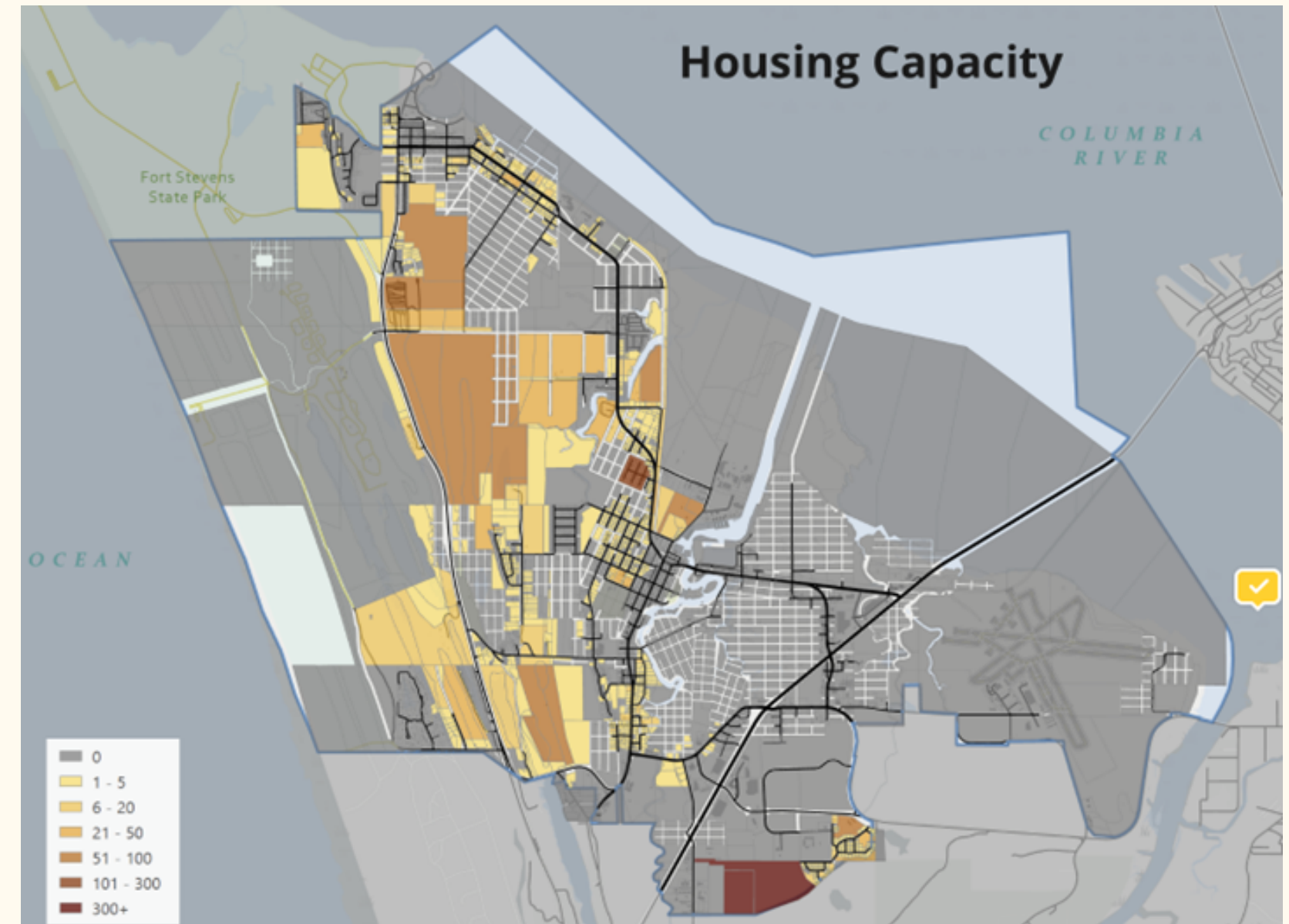


Warrenton's Adopted 2019 Analysis

Housing capacity in Warrenton is:

- 429 buildable acres
- Capacity for 2,624 units, including detached homes, townhomes, and apartments

This projected capacity is far above the state's official population of 1,117 new households in Warrenton by 2038.



Zone	Unconstrained Acres		Housing Unit Capacity	
	Acres	Percentage	Units	Percentage
R40 - Low Density	107	(25%)	296	(11%)
R10 - Intermediate Density	91	(22%)	221	(9%)
RGM - Growth Management Zone	50	(12%)	121	(5%)
RM - Medium Density	61	(14%)	401	(15%)
RH - High Density	121	(28%)	1,575	(60%)
Total	429	100%	2624	100%

Our Analysis

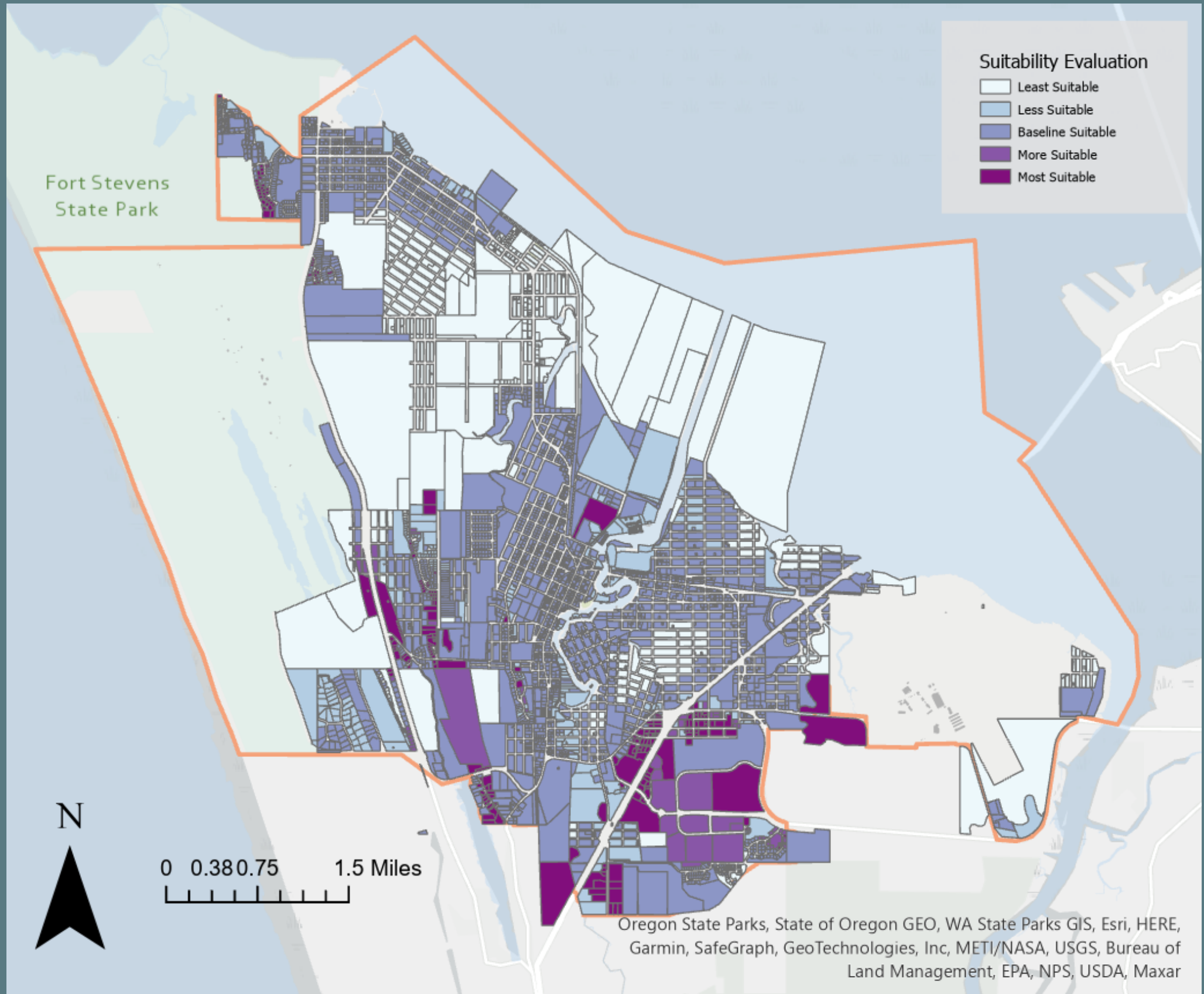
Methodology

The Analysis

- 5 Analysis Lenses
 - Environmental Constraints
 - Housing Capacity and Equity
 - Infrastructure & Future Growth Areas
 - Amenities & Livability
 - Emergency Management & Community Resilience
- Conduct GIS modelling & suitability analyses
- Develop geographic priority recommendations and connections to policy

Sample Evaluation Framework

(based on Emergency Management & Community Resilience factors)



Analysis Lenses

Environmental Constraints

- Warrenton has a number of unique natural features that shape the landscape, natural beauty, recreation areas, economic opportunities, and overall character of the Warrenton community.
- However, they also create a set of challenges and constraints for any potential development in the city.
 - Locally Significant Wetlands
 - FEMA 100 Year Floodplains
 - Steep Slopes Over 25%
 - Beach and Dune Areas

Analysis Lenses

Infrastructure & Future Growth Areas

Finds proximity of parcels to Warrenton's existing infrastructure network, parcel size and ownership characteristics, to determine areas suited for infill redevelopment or prioritization for future expansion within the City.

Emergency Management & Community Resilience

Identifies infrastructure to respond to emergencies including assembly areas, evacuation routes, and retrofitted bridges, and considers tsunami risk zones and medium and high landslide risk areas.

Amenities and Livability

Evaluates parcels in the context of community assets, including schools, employment centers, restaurants, trails and open space, and transit to locate future development within complete communities.

Housing Capacity & Equity

Examines the built environment, regulatory factors, and development policy to determine the impact of existing capacity in identified priority areas and promote policies to achieve the city's multi-faceted housing goals.

Next Steps

The results of this project will provide the city with geographic areas to consider dedicating funding to extending infrastructure or prioritizing in the Capital Improvement Plan, recommendations that build on the existing proposals from the County Housing Strategies and City HNA, and the data underlying those recommendations.

Our team will be continuing the suitability analysis and developing recommendations for the city over the next month. The final report and recommendations will be presented at the City Commission work session on **June 13th at 5:00 PM**. Copies of our team's final report will be available through the Warrenton Planning Department.

We welcome questions.