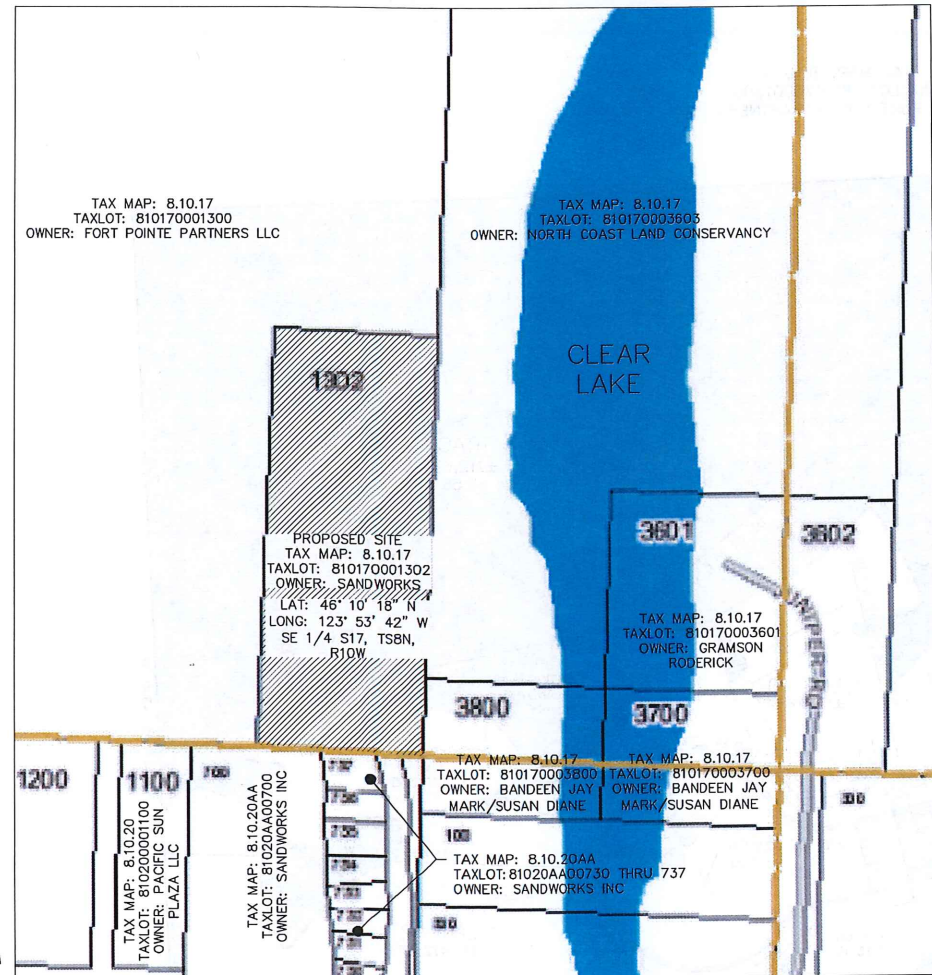


CLEAR LAKE SUBDIVISION LAND USE SUBMITTAL

LOCATED AT THE NORTHERLY TERMINUS OF KALMIA AVENUE



OWNER:
GILL GRAMSON
SANDWORKS
15 N 17TH PLACE
WARRENTON, OREGON 97146

ENGINEER:
FIRWOOD DESIGN GROUP, LLC
359 E. HISTORIC COLUMBIA RIVER DRIVE
TROUTDALE, OREGON 97060
(503) 668-3737

- SHEET INDEX**
- 1 - COVER SHEET & VICINITY MAP
 - 2 - PRELIMINARY PLAT
 - 3 - GRADING & EROSION CONTROL PLAN
 - 4 - EROSION CONTROL NOTES & DETAILS
 - 5 - STREET AND STORM SEWER PLAN
 - 6 - STORM SEWER AND OUTFALL PLAN
 - 8 - WATER AND SANITARY SEWER PLAN
 - 9 - SANITARY SEWER SERVICE PROFILES
- DATUM**
- HORIZONTAL DATUM:
NAD_1983_HARN_STATEPLANE_OREGON_NORTH_FIPS_3601_FEET_INTL
- VERTICAL DATUM:
NAVD 88

PRELIMINARY

DRAWN: BD	DESIGNED: EH	CHECKED: EH
SCALE: AS SHOWN	DATE: FEB 5, 2019	
PROJECT NO. E18-030		

FDG
Firwood Design Group, LLC
SURVEYING • ENGINEERING • PLANNING

359 E HISTORIC COLUMBIA RIVER HWY
TROUTDALE, OREGON 97060
BUS: (503) 668-3737 • FAX: (503) 668-3788

GILL GRAMSON
15 NW 17TH PLACE
WARRENTON, OR 97146

COVER SHEET & VICINITY MAP
CLEAR LAKE SUBDIVISION
KALMIA AVE, WARRENTON, OR 97146